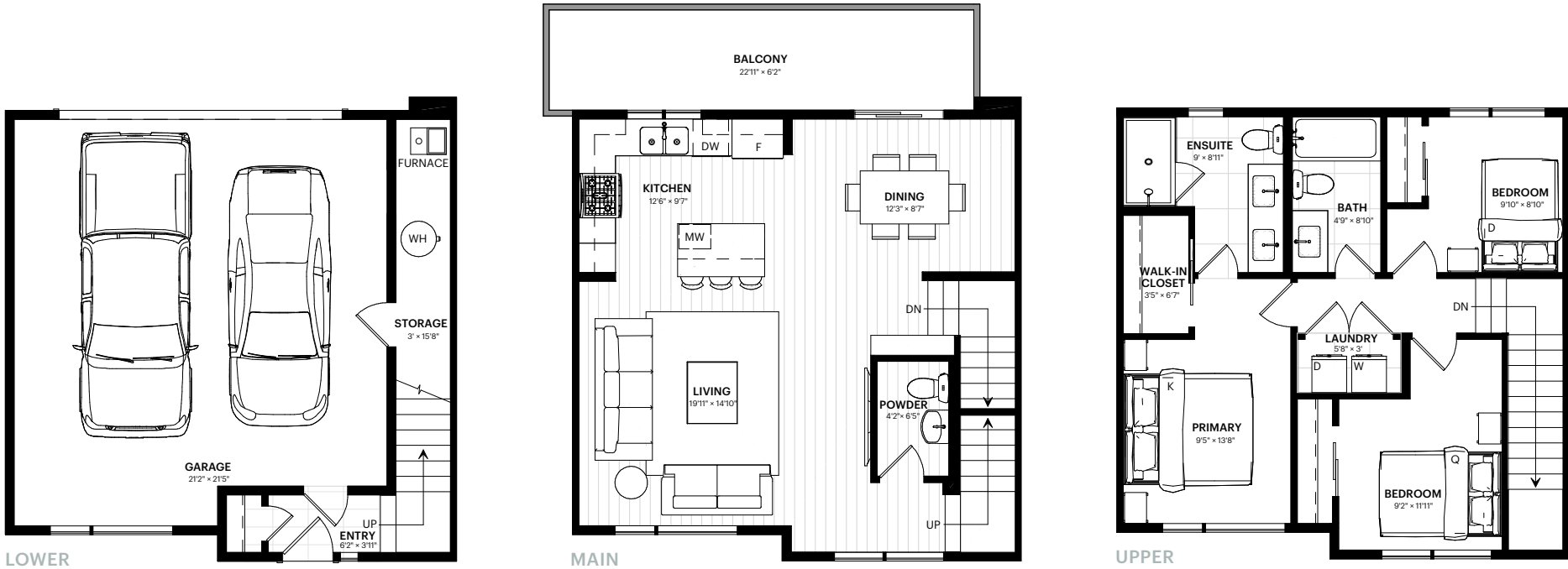


THB 3Bed 2.5Bath

Interior 1,405 sq ft Exterior 135 sq ft



The developer (Anthem Currie Developments II LP) reserves the right to make changes and modifications to the information contained herein. Floorplans and floorplates are subject to change without notice. Select homes will have a common water meter room installed inside the garage. Please contact a developer sales representative for details. The developer may also make such further development modifications as are permitted by the disclosure information, as may be amended, the contract of purchase and sale between a purchaser and developer (if applicable), or otherwise. E.&O.E.

Billy